

Vacu-Magnet 700



The **Vacu-Magnet 700** is the big brother of the very popular SV 200 E all-purpose vacuum unit (up to 200 kg – 441 lbs).

Equipped with a powerful 223 m³/h blower pump, the machine is particularly suitable for processing porous (concrete) products up to 700 kg – 1540 lbs.

The pump is driven by an integrated generator with a continuous output of 2.7 KVA. The generator is powered by a powerful Honda GX200 petrol engine and has a standard 230-volt socket for other devices as well.



Versions/Art.-No.

Vacu-Magnet 700

Vacu-Magnet 700 EP
incl. transport support frame
Art.-No. 500034

Vacu-Magnet 700 EPR
incl. transport support frame
with radio remote control
Art.-No. 500067

Suction pads for Vacu-Magnet 700

Suction pad 600 x 700 mm
up to 350 kg – 772 lbs
with integrated quick-change system
Art.-No. 54916

Suction pad 900 x 900 mm
up to 700 kg – 1540 lbs
with integrated quick-change system
Art.-No. 55196

Technical data:*

Working Load Limit: 700 kg – 1540 lbs

Weight: 60 kg – 132 lbs

Dimensions: (LxWxH): 827x822x1083 mm

Propulsion: Generator 2,7 KVA
driven by GX200-Honda-petrol engine

Pump capacity: 223 m³/h

Minimum work pressure: -0.2 bar

Controls: Manuell or radio remote control



Vacu-Magnet 700



Furthermore, all available suction pads from the SV 200 E programme (up to 200 kg – 441 lbs) – without quick-change system – can be used:

for stone slabs

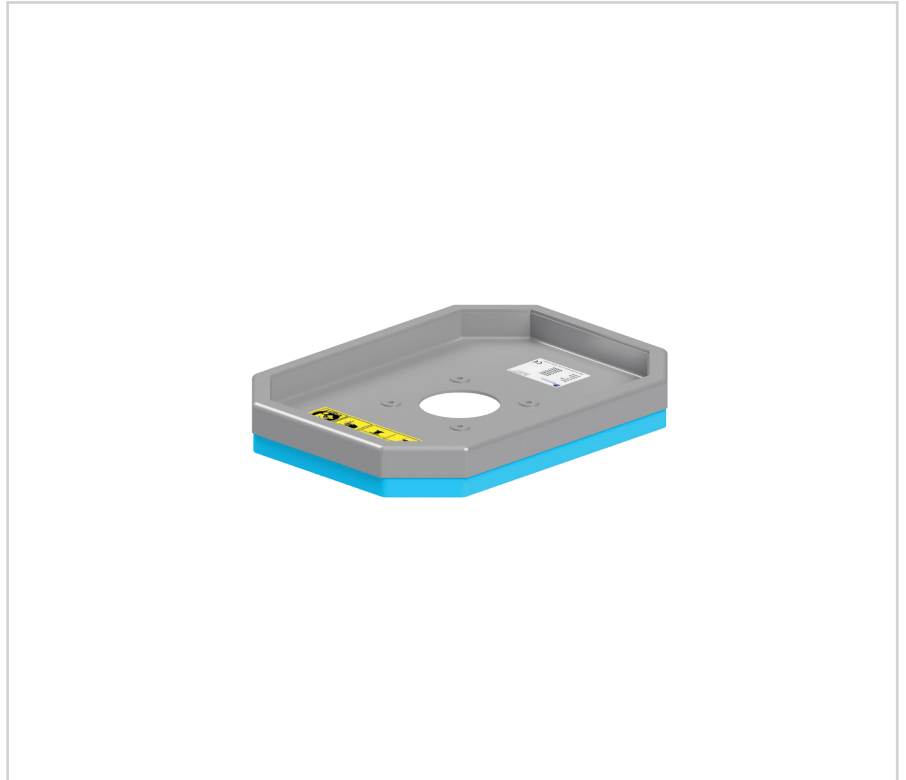
230 x 230 mm up to 30 kg – 66 lbs
Art.-No. 53559

300 x 400 mm up to 95 kg – 210 lbs
Art.-No. 53511

300 x 600 mm up to 150 kg – 330 lbs
Art.-No. 53512

400 x 600 mm up to 200 kg – 441 lbs
Art.-No. 53544

500 x 500 mm up to 200 kg – 441 lbs
Art.-No. 53513



for curbs

100 x 300 mm, 90° up to 70 kg – 154 lbs
Art.-No. 500236

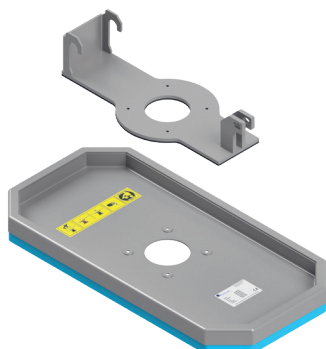
90/120 mm (DK) up to 95 kg – 210 lbs
Art.-No. 500237

130/150, 180/200 mm up to
165 kg – 364 lbs
Art.-No. 54251



A quick-change adapter can also be retrofitted as an option:

**Quick-change adapter
for suction pad**
Art.-No. 55035



In combination with this adapter, all suction pads from the tube lifter range up to 200 kg can be used.

**Adapter for
Vacu-Magnet 700 EP &
SV 200 E**
Art.-No. 53622

